

# Adept Fleet Appliance

## User's Guide



**adept**<sup>®</sup>



# Adept Fleet Appliance

## User's Guide



11035-000 Rev. B  
September 2011



5960 Inglewood Drive • Pleasanton, CA 94588 • USA • Phone 925.245.3400 • Fax 925.960.0452

Otto-Hahn-Strasse 23 • 44227 Dortmund • Germany • Phone +49.231.75.89.40 • Fax +49.231.75.89.450

Block 5000 Ang Mo Kio Avenue 5 • #05-12 Techplace II • Singapore 569870 • Phone +65.6755 2258 • Fax +65.6755 0598

# Copyright Notice

---

The information contained herein is the property of Adept Technology, Inc., and shall not be reproduced in whole or in part without prior written approval of Adept Technology, Inc. The information herein is subject to change without notice and should not be construed as a commitment by Adept Technology, Inc. The documentation is periodically reviewed and revised.

Adept Technology, Inc., assumes no responsibility for any errors or omissions in the documentation. Critical evaluation of the documentation by the user is welcomed. Your comments assist us in preparation of future documentation. Please submit your comments to:

[techpubs@adept.com](mailto:techpubs@adept.com).

Copyright © 2011 by Adept Technology, Inc.

Adept, the Adept logo, the Adept Technology logo, AdeptVision, AIM, Blox, Bloxview, FireBlox, Fireview, Meta Controls, MetaControls, Metawire, Soft Machines, and Visual Machines are registered trademarks of Adept Technology, Inc.

Brain on Board is a registered trademark of Adept Technology, Inc. in Germany.

Adept ACE, ACE PackXpert, Adept 1060 / 1060+, Adept 1850 / 1850 XP, Adept 540 Adept 560, Adept AnyFeeder, Adept Award, Adept C40, Adept C60, Adept CC, Adept Cobra 350, Adept Cobra 350 CR/ESD, Adept Cobra 550, Adept 550 CleanRoom, Adept Cobra 600, Adept Cobra 800, Adept Cobra i600, Adept Cobra i800, Adept Cobra PLC Server, Adept Cobra PLC800, Adept Cobra s600, Adept Cobra s800, Adept Cobra s800 Inverted, Adept Cobra Smart600, Adept Cobra Smart800, Adept DeskTop, Adept FFE, Adept Fleet Appliance, Adept FlexFeeder 250, Adept IC, Adept iSight, Adept Impulse Feeder, Adept LineVision, Adept MB-10 ServoKit, Adept MC, Adept MotionBlox-10, Adept MotionBlox-40L, Adept MotionBlox-40R, Adept MV Adept MV-10, Adept MV-19, Adept MV4, Adept MV-5, Adept MV-8, Adept OC, Adept Python, Adept Quattro s650, Adept Quattro s650H, Adept Quattro s650HS, Adept Quattro s800H, Adept sDIO, Adept SmartAmp, Adept SmartAxis, Adept SmartController CS, Adept SmartController CX, Adept SmartModule, Adept SmartMotion, Adept SmartServo, Adept sMI6, Adept Viper s650, Adept Viper s850, Adept Viper s1300, Adept Viper s1700, AdeptCartesian, AdeptCast, AdeptForce, AdeptFTP, AdeptGEM, AdeptModules, AdeptMotion, AdeptMotion Servo, AdeptMotion VME, AdeptNet, AdeptNFS, AdeptOne, AdeptOne-MV, AdeptOne-XL, AdeptRAPID, AdeptSight, AdeptSix, AdeptSix 300, AdeptSix 300 CL, AdeptSix 300 CR, AdeptSix 600, AdeptTCP/IP, AdeptThree, AdeptThree-MV, AdeptThree-XL, AdeptTwo, AdeptVision, AVI AdeptVision, AGS AdeptVision GV, AdeptVision I, AdeptVision II, AdeptVision VME, AdeptVision VXL, AdeptVision XGS, AdeptVision XGS II, AdeptWindows, AdeptWindows Controller, AdeptWindows DDE, AdeptWindows Offline Editor, AdeptWindows PC, AIM Command Server, AIM Dispense, AIM MotionWare, AIM PCB, AIM VisionWare, A-Series, FlexFeedWare, HyperDrive, IO Blox, MicroV+, MobileEyes, MobilePlanner, MotionBlox, ObjectFinder, ObjectFinder 2000, PackOne, PalletWare, sAVI, SetNetGo, S-Series, UltraOne, V, V+ and VisionTeach are trademarks of Adept Technology, Inc.

Any trademarks from other companies used in this publication are the property of those respective companies.

Created in the United States of America

# Table of Contents

---

<b>Chapter 1: Introduction</b>	<b>7</b>
1.1 Product Description	7
Key Features	8
What Comes With a Fleet Appliance?	8
1.2 How Can I Get Help?	8
Related Manuals	8
Adept Document Library	9
Factory Repairs	9
<b>Chapter 2: Safety</b>	<b>13</b>
2.1 Dangers, Warnings, Cautions, and Notes	13
2.2 Important Safety Instructions	14
2.3 Additional Safety Information	14
2.4 Intended Use of the Fleet Appliance	16
2.5 Safety Requirements for Additional Equipment	16
2.6 Qualification of Personnel	16
<b>Chapter 3: Installation and Setup</b>	<b>19</b>
3.1 Unpacking and Inspecting the Fleet Appliance	19
Before Unpacking	19
Unpacking	19
Repacking for Relocation	19
Transport and Storage	19
3.2 Installing the Equipment	20
Space Around the Chassis	20
Mounting the Fleet Appliance	20
Operating Environment	21
Power Connection	21
3.3 Setting Up the Ethernet Connection	21
Overview	21
Setting the IP Address on Your PC	22
Connecting Your PC to the Fleet Appliance	22
Connecting to SetNetGo	22
Configuring Network Settings for the LAN Ethernet Port	23
Enabling SetNetGo	24
Connecting the Fleet Appliance to Your Network	25
<b>Chapter 4: Operation</b>	<b>27</b>

4.1	Turning Power ON and OFF.....	27
4.2	Accessing the Fleet Appliance from the Robot.....	27
4.3	Updating ARAM.....	28
	Starting and Stopping ARAM.....	28
	ARAM Crash Recovery.....	29
4.4	Resetting to Factory Defaults.....	30
<b>Chapter 5: Technical Specifications.....</b>		<b>31</b>
5.1	Dimension Drawings.....	31
	Left View of the Fleet Appliance.....	31
	Top View of the Fleet Appliance.....	32
	Rear View of the Fleet Appliance.....	32
	Front View of the Fleet Appliance.....	33
5.2	Fleet Appliance Specifications.....	33

# Chapter 1: Introduction

---

The Adept Motivity Fleet Appliance is a hardware and software solution that helps you to manage a large fleet of Adept mobile robots. Ideally, when managing more than a few robots at a time, all of the robots operate identically to each other. However, maintaining identical configurations on each individual robot can be time-consuming. The Fleet Appliance solves this problem by allowing you to manage map and configuration updates in one, central location which can then be pushed out to each robot in the fleet. It also allows the mobile robots to be able to work within close range of each other, without encountering traffic issues or collisions.

The Adept Motivity Fleet Appliance is an extension of Adept Motivity, which includes the following components:

- The Adept Motivity Core
- The Adept Mobile Robot
- The Adept MobileEyes software
- The Adept MobilePlanner software
- The Adept Motivity Fleet Appliance
- The Adept Motivity Single-Robot Simulator Appliance

For more information on all of the individual components of Adept Motivity, refer to How Can I Get Help? on page 8.

## 1.1 Product Description

As a component of Adept Motivity, the Fleet Appliance helps with the setup and management of a large fleet of robots. Specifically, the Fleet Appliance can communicate with all of the robots in the fleet and coordinate navigation between individual mobile robots.



*Figure 1-1. Front View of Fleet Appliance with Access Panel Opened*

## Key Features

The following is a list of the key features of the Adept Motivity Fleet Appliance. The Fleet Appliance:

- Allows you to manage the configuration for the entire fleet of robots. Each robot downloads its configuration file from the Fleet Appliance; thus, saving you time and making updates less error-prone.
- Allows for optimum traffic flow, adjusting a robot's path in real time. Since the Fleet Appliance has advanced knowledge of each robot's path, it can coordinate traffic patterns and make smarter decisions.
- Saves wireless bandwidth because each robot only sends and receives information from the Fleet Appliance, rather than needing information from each individual robot. This leaves valuable WiFi space for handheld scanners and other mobile devices.
- Serves as a proxy for robot data, such as location, battery state and task status. As a result, not only does this save wireless Bandwidth, it also allows MobileEyes to connect to one central point, allowing the operator to monitor all robots in the fleet from a single application.
- Runs robustly without human intervention. The Fleet Appliance is an appliance, not a server, therefore it does not need maintenance from IT staff, it can handle power outages without a loss, it is solely dedicated to the task and won't be affected by other services, and if something happened to the appliance it can be replaced and the new one will operate identically.

## What Comes With a Fleet Appliance?

The Adept Motivity Fleet Appliance comes with the chassis shown in the figure above, a power cable and rackmount rails. The Fleet Appliance has flanges for rack-mounting on a 19 inch rack. The ARAMCentral software comes pre-loaded on the appliance.

## 1.2 How Can I Get Help?

For details on getting assistance with your Adept software or hardware, you can access the following information sources on the Adeptcorporate website:

- For contact information: <http://www.adept.com/contact/americas>
- For product support information: <http://www.adept.com/support/service-and-support/main>
- For user discussions, support, and programming examples: <http://www.adept.com/forum/>
- For further information about Adept Technology, Inc.: <http://www.adept.com>

## Related Manuals

This manual covers the installation and startup of the Adept Motivity Fleet Appliance. The following manuals (available on the AdeptDocument Library CD-ROM provided with each system) provide information on related products.

Table 1-1. Related Manuals

Manual Title	Description
<a href="#">The Adept Motivity Core User's Guide</a>	Describes the Adept Motivity Core, which is a robot motion controller that integrates the mobile robot with onboard computer, motivity software, laser-guidance for autonomous navigation, location-tracking and obstacle management, camera for visual-inspection, battery management, and communication channels.
<a href="#">The Adept MT400 User's Guide</a>	Describes the mobile robot base, which incorporates the autonomous functionality of the Adept Motivity Core, but packaged into a fully-functional mobile base.
<a href="#">The Adept Motivity User's Guide</a>	Describes the Motivity software, including SetNetGo, MobileEyes and MobilePlanner.

## Adept Document Library

The Adept Document Library (ADL) contains documentation for Adept products. You can access the ADL through either of the following methods:

- Select **Support > Document Library** from the menu bar on the Adept website
- Type the following URL into your web browser:

[http://www.adept.com/Main/KE/DATA/adept\\_search.htm](http://www.adept.com/Main/KE/DATA/adept_search.htm)

To locate information on a specific topic, use the Document Library search engine on the ADL main page.

## Factory Repairs

If after reading this manual, you are having hardware problems with your Adept Motivity Fleet Appliance and are sure that it needs repair, contact us at:

[support@adept.com](mailto:support@adept.com)

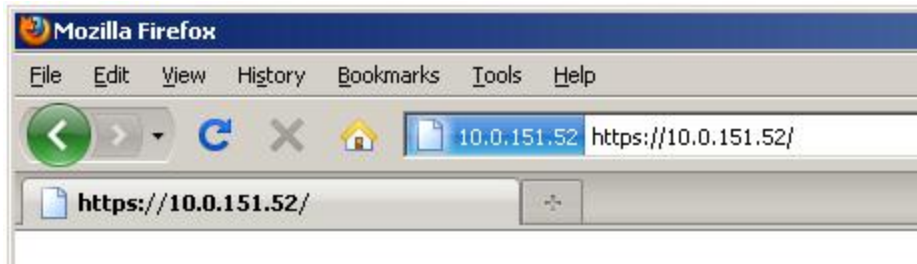
- In the body of your e-mail message, provide your product's serial number and describe the problem you are having in as much detail as possible.
- Attach your .debug file to the email. Refer to the next section for details on retrieving your .debug file.

Tell us when and how we can best contact you. We assume email is the best format, unless otherwise notified. We will try to resolve the problem through communication. If the Fleet Appliance must be returned to the factory for repair, obtain a Repair Authorization Code and shipping details from us first.

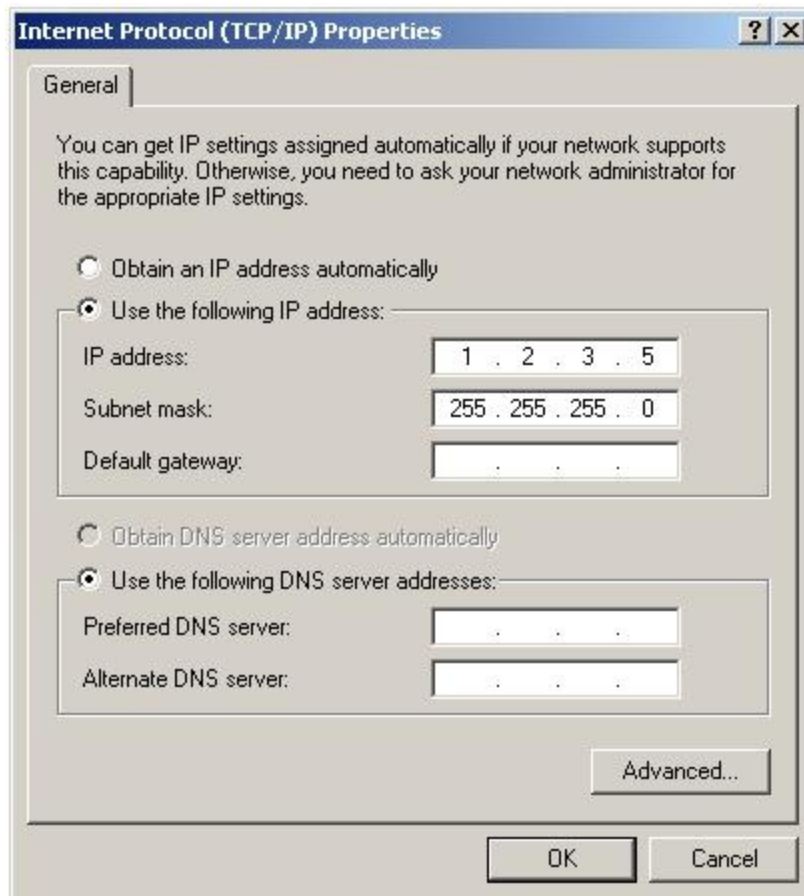
### Including a .debug File

If you have the Adept Motivity Fleet Appliance set up on your network, the .debug file can be retrieved by opening a web browser and entering the URL:

`https://your_FleetApp_IP`



If the Fleet Appliance has not been set up on your site's network, then you will have to access it directly from a separate PC, and configured to talk to the Fleet Appliance over an Ethernet port. The PC's IP address should be set to: 1.2.3.5. The subnet mask should be 255.255.255.0:



Using a network patch cable (crossover), connect the network port of your computer to the maintenance Ethernet port.

Open a web browser and enter the URL: https://1.2.3.4



In either case, you will be requested to confirm security certificates. You should now have a window similar to the following:



1. Scroll to the bottom in the left pane and select Debug Info (circled in red).
2. This will display a Download debug info button.
3. Select Download debug info.
4. Save the file, and attach it to your support request.



## Chapter 2: Safety

---

### 2.1 Dangers, Warnings, Cautions, and Notes

There are six levels of special alert notation used in Adept manuals. In descending order of importance, they are:



**DANGER:** This indicates an imminently hazardous electrical situation which, if not avoided, will result in death or serious injury.



**DANGER:** This indicates an imminently hazardous situation which, if not avoided, will result in death or serious injury.



**WARNING:** This indicates a potentially hazardous electrical situation which, if not avoided, could result in serious injury or major damage to the equipment.



**WARNING:** This indicates a potentially hazardous situation which, if not avoided, could result in serious injury or major damage to the equipment.



**CAUTION:** This indicates a situation which, if not avoided, could result in minor injury or damage to the equipment.

**NOTE:** This provides supplementary information, emphasizes a point or procedure, or gives a tip for easier operation.

## 2.2 Important Safety Instructions

Read the installation and operation instructions before using the equipment.

- Do not drop the Fleet Appliance or otherwise operate it in an irresponsible manner.
- Do not get the Fleet Appliance wet. Do not expose the equipment to rain or moisture.
- Do not use power extension cords, unless properly rated.
- Never access the interior of the Fleet Appliance while power is connected.

## 2.3 Additional Safety Information

The standards and regulations listed in this manual contain additional guidelines for robot system installation, safeguarding, maintenance, testing, startup, and operator training. The following table lists some sources for the various standards.

Table 2-1. Standards and Directives

<p>SEMI International Standards 3081 Zanker Road San Jose, CA 95134 USA</p> <p>Phone: 1.408.943.6900 Fax: 1.408.428.9600</p> <p><a href="http://www.semi.org">http://www.semi.org</a></p>	<p>American National Standards Institute (ANSI) 11 West 42nd Street, 13th Floor New York, NY 10036 USA</p> <p>Phone 212-642-4900 Fax 212-398-0023</p> <p><a href="http://www.ansi.org">http://www.ansi.org</a></p>
<p>Underwriters Laboratories Inc. 333 Pfingsten Road Northbrook, IL 60062-2096 USA</p> <p>Phone: +1-847-272-8800 Fax: +1-847-272-8129</p> <p><a href="http://www.ul.com/info/standard.htm">http://www.ul.com/info/standard.htm</a></p>	<p>BSI Group (British Standards) 389 Chiswick High Road London W4 4AL United Kingdom</p> <p>Phone +44 (0)20 8996 9000 Fax +44 (0)20 8996 7400</p> <p><a href="http://www.bsi-global.com">http://www.bsi-global.com</a></p>
<p>Global Engineering Documents 15 Inverness Way East Englewood, CO 80112 USA</p> <p>Phone 800-854-7179 Fax 303-397-2740</p> <p><a href="http://global.ihs.com">http://global.ihs.com</a></p>	<p>Document Center, Inc. 1504 Industrial Way, Unit 9 Belmont, CA 94002 USA</p> <p>Phone 415-591-7600 Fax 415-591-7617</p> <p><a href="http://www.document-center.com">http://www.document-center.com</a></p>
<p>IEC, International Electrotechnical Commission Rue de Varembe 3 PO Box 131 CH-1211 Geneva 20 Switzerland</p> <p>Phone 41 22 919-0211 Fax 41 22 919-0300</p> <p><a href="http://www.iec.ch">http://www.iec.ch</a></p>	<p>Robotic Industries Association (RIA) 900 Victors Way PO Box 3724 Ann Arbor, MI 48106 USA</p> <p>Phone 313-994-6088 Fax 313-994-3338</p> <p><a href="http://www.robotics.org">http://www.robotics.org</a></p>
<p>DIN, Deutsches Institut für Normung e.V. German Institute for Standardization Burggrafenstrasse 6 10787 Berlin Germany</p> <p>Phone.: +49 30 2601-0 Fax: +49 30 2601-1231</p> <p><a href="http://www.din.de">http://www.din.de</a></p> <p><a href="http://www2.beuth.de/">http://www2.beuth.de/</a> (publishing)</p>	

## 2.4 Intended Use of the Fleet Appliance

The installation and use of Adept products must comply with all safety instructions and warnings in this manual. Installation and use must also comply with all applicable local and national requirements and safety.

The body of the Fleet Appliance must not come into contact with liquids.

The Adept equipment is not intended for use in any of the following situations:

- In hazardous (explosive) atmospheres
- In mobile, portable, marine, or aircraft systems
- In life-support systems
- In residential installations
- In situations where the Adept equipment will be subject to extremes of heat or humidity.



**CAUTION:** The instructions for installation and operation given in this manual must be strictly observed.

All persons that install, commission, operate, or maintain the Fleet Appliance must:

- Have the necessary qualifications
- Read and follow exactly the instructions in this manual

If there is any doubt concerning the application, ask Adept to determine if it is an intended use.

## 2.5 Safety Requirements for Additional Equipment

If the system is to be used in an EU or EEA member country, all accessories used with the Fleet Appliance must comply with the safety requirements in the European Machine Directive 89/392/EEC (and subsequent amendments) and related harmonized European, international, and national standards. For robot systems, these include: EN 775/ISO 10218, sections 5,6; EN 292-2; and EN 60204.

In other countries, Adept strongly recommends, in addition to complying with the applicable local and national regulations, that a similar level of safety be obtained.

In the USA, applicable standards include ANSI/RIA R15.06 and ANSI/UL 1740.

In Canada, applicable standards include CAN/CSA Z434.

## 2.6 Qualification of Personnel

This manual assumes that all personnel have attended an Adept training course and have a working knowledge of the system. The user must provide the necessary additional training for all personnel who will be working with the system.

All personnel must observe sound safety practices during the installation, operation, and testing of all electrically powered equipment. To avoid injury or damage to equipment, always remove power by disconnecting the AC power from the source before attempting any repair or upgrade activity. Use appropriate lockout procedures to reduce the risk of power being restored by another person while you are working on the system.



# Chapter 3: Installation and Setup

---

This chapter covers the installation and setup of the Fleet Appliance.

## 3.1 Unpacking and Inspecting the Fleet Appliance

This section covers unpacking, inspecting and repacking instructions.

### Before Unpacking

Carefully inspect all shipping packages for evidence of damage during transit. If any damage is indicated, request that the carrier's agent be present at the time the container is unpacked.

### Unpacking

Before signing the carrier's delivery sheet, compare the actual items received (not just the packing slip) with your equipment purchase order. Verify that all items are present and that the shipment is correct and free of visible damage.

If the items received do not match the packing slip, or are damaged, do not sign the receipt. Contact Adept as soon as possible.

If the items received do not match your order, please contact Adept immediately.

Retain all containers and packaging materials. These items may be necessary to settle claims or, at a later date, to relocate the equipment.

### Repacking for Relocation

If the Fleet Appliance needs to be relocated, reverse the steps in the installation procedures in this chapter. Reuse all original packing containers and materials and follow all safety notes used for installation. Improper packaging for shipment will void your warranty.

The Fleet Appliance is not intended for use in hazardous environments (explosive gas, water, dust, oil mist).

### Transport and Storage

The Fleet Appliance must be shipped and stored in a temperature-controlled environment, within the range  $-40^{\circ}$  to  $70^{\circ}$  C ( $-40^{\circ}$  to  $158^{\circ}$  F). The recommended humidity range is 5 to 95 percent, non-condensing. It should be shipped and stored in the Adept-supplied packaging, which is designed to prevent damage from normal shock and vibration. You should protect the packaging from excessive shock and vibration.

The Fleet Appliance must always be stored and shipped in a clean, dry area that is free from condensation.

The Fleet Appliance weighs 19 lbs.

## 3.2 Installing the Equipment

The Fleet Appliance can be mounted in a 19 inch equipment rack or it can be placed on a shelf or table. See the [Technical Specifications](#) for product dimensions.

### Space Around the Chassis

When the Fleet Appliance is installed, you must allow 10 mm at the back of the unit and 13 mm on the sides of the unit for proper air circulation.

### Mounting the Fleet Appliance

To rack-mount the Fleet Appliance in a standard 19-inch equipment rack, place the Fleet Appliance in the rack and secure with mounting screws through the four holes in the rack-mount tabs.

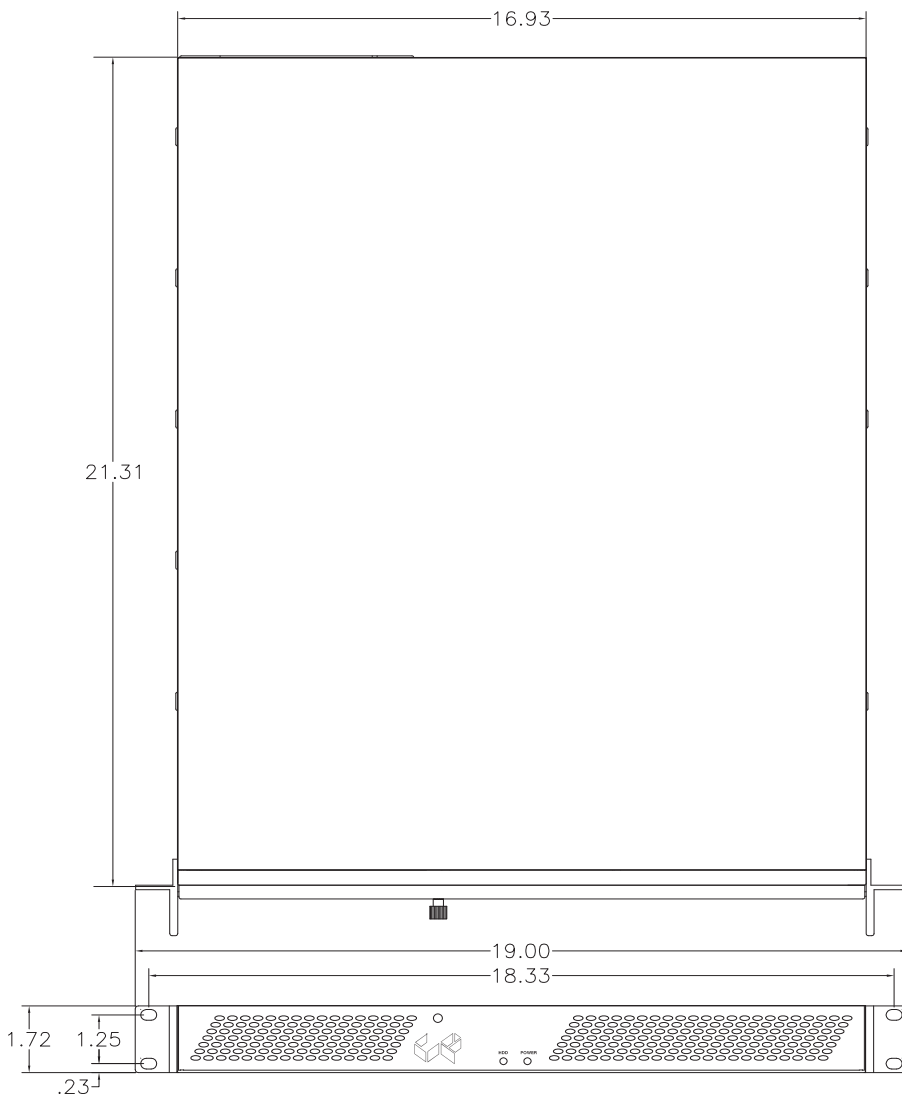


Figure 3-1. Rack-Mount Dimensions for the Fleet Appliance

**To install the Fleet Appliance in a 19" equipment rack:**

1. Insert the Fleet Appliance into an empty slot in a rack.
2. Insert four screws through the four holes in the mounting ears to attach the unit to the rack.

**Operating Environment**

The Fleet Appliance is designed to operate in the following environment:

- Temperature: 0° to 55° C (32° to 131° F)
- Humidity: 0 - 95%, non-condensing

**Power Connection**

The Adept Motivity Fleet Appliance comes with a 110 VAC power cable.

**3.3 Setting Up the Ethernet Connection**

A wired Ethernet connection between the Fleet Appliance and your wireless network is required.

Description	Specification
<b>Ports</b>	
Ethernet	2 wired RJ-45

The Fleet Appliance has two Ethernet ports:

- a Maintenance port

The Maintenance port's IP address is always enabled and permanently set to the IP address 1.2.3.4.

Use the Maintenance port to initially connect to and configure the Fleet Appliance. After you configure the Fleet Appliance, use the LAN port to connect the Fleet Appliance to your network.

and

- a LAN port

This port is used to connect the unit to your LAN.

**NOTE:** Contact your System Administrator for assistance configuring the Fleet Appliance for your network.

**Overview**

To connect to and configure the Fleet Appliance, perform the following tasks:

1. [Set the IP address on your PC.](#)
2. [Connect Your PC to the Fleet Appliance.](#)
3. [Connect to SetNetGo.](#)
4. [Configure the network settings for the LAN Ethernet port.](#)
5. [Enable SetNetGo and define login information.](#)
6. [Connect the Fleet Appliance to your network.](#)

The tasks are detailed in the following sections.

### Setting the IP Address on Your PC

Configure a PC (typically a laptop computer) with the following network settings:

- IP address = 1.2.3.x, where x is any number 1 through 254, except 4.
- Netmask = 255.255.255.0
- No special DNS or gateway settings are needed.

On a Microsoft Windows machine, open the Networking control panel, refer to the help on your PC for more information.

### Connecting Your PC to the Fleet Appliance

Connect a crossover CAT-5e Ethernet cable to an Ethernet port (RJ-45) on the PC and the Maintenance Ethernet port (RJ-45) on the Fleet Appliance.



Figure 3-2. Maintenance and LAN Ethernet Ports

**NOTE:** If you are ever unable to connect to the Fleet Appliance using the LAN Ethernet port (due to a lost password or IP address conflict), you can directly connect to the Maintenance Ethernet port, which does not require a password and has a fixed IP address (1.2.3.4).

### Connecting to SetNetGo

SetNetGo lets you manage a variety of settings, update the robot's systems and read the robot's operations logs. SetNetGo is an HTTPS server, therefore it is accessed using a secure web browser such as Firefox or Internet Explorer.

**To access SetNetGo:**

1. Start a web browser on your computer.
2. Enter the URL `https://1.2.3.4` in the address bar of the web browser. This is the Adept mobile robot Maintenance Ethernet address. When accessing SetNetGo from a wired Maintenance Ethernet port, you do not need a username or password.



The SetNetGo startup screen is shown below.



Figure 3-3. SetNetGo Startup Screen

## Configuring Network Settings for the LAN Ethernet Port

To set the network settings for the LAN Ethernet port:

1. Select **Networking > Wired Aux Ethernet**. The Onboard Ethernet Settings screen is displayed as shown below.

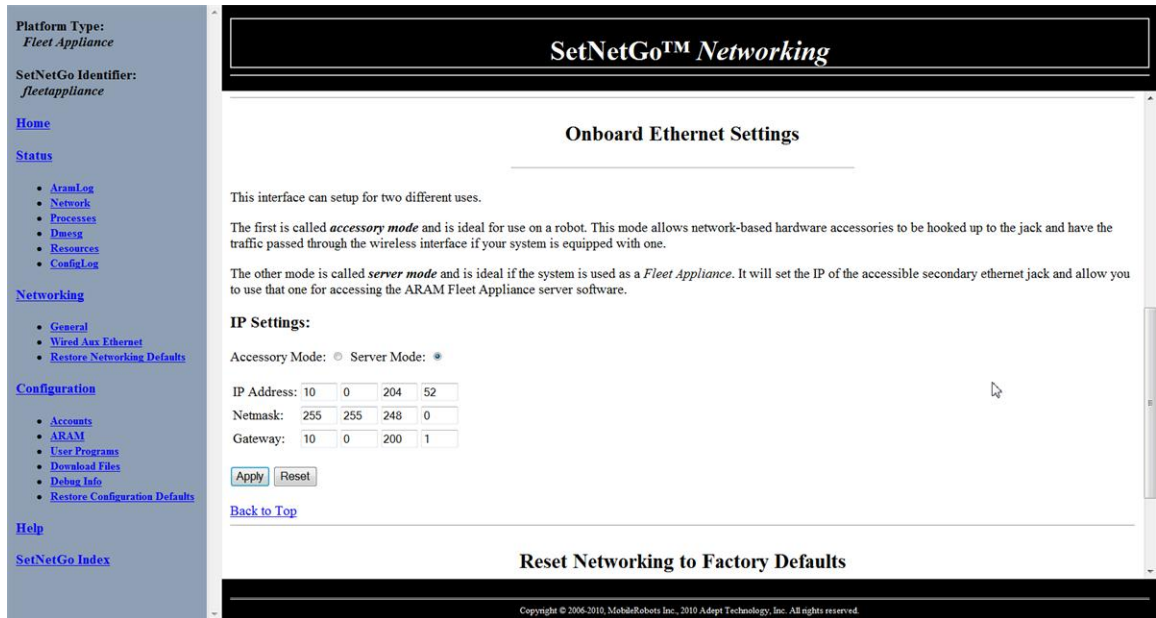


Figure 3-4. SetNetGo Onboard Ethernet Settings Screen

1. Select the **Server Mode** radio button under the IP Settings.
2. Enter a valid, available **IP address** for the Fleet Appliance in the IP Address field. Do not use the IP address: 1.2.3.4, because this would create a conflict with the IP address permanently set for the maintenance Ethernet port.
3. Enter the appropriate **Netmask** for a host on your network in the Netmask field.
4. Enter the IP address of the default **Gateway**. (This is the IP address of the device used to connect to the Internet, typically a router.)
5. Click **Apply**.

## Enabling SetNetGo

To enable SetNetGo on the LAN Ethernet port:

1. Select **Networking > General**. The General Settings screen is displayed as shown below.

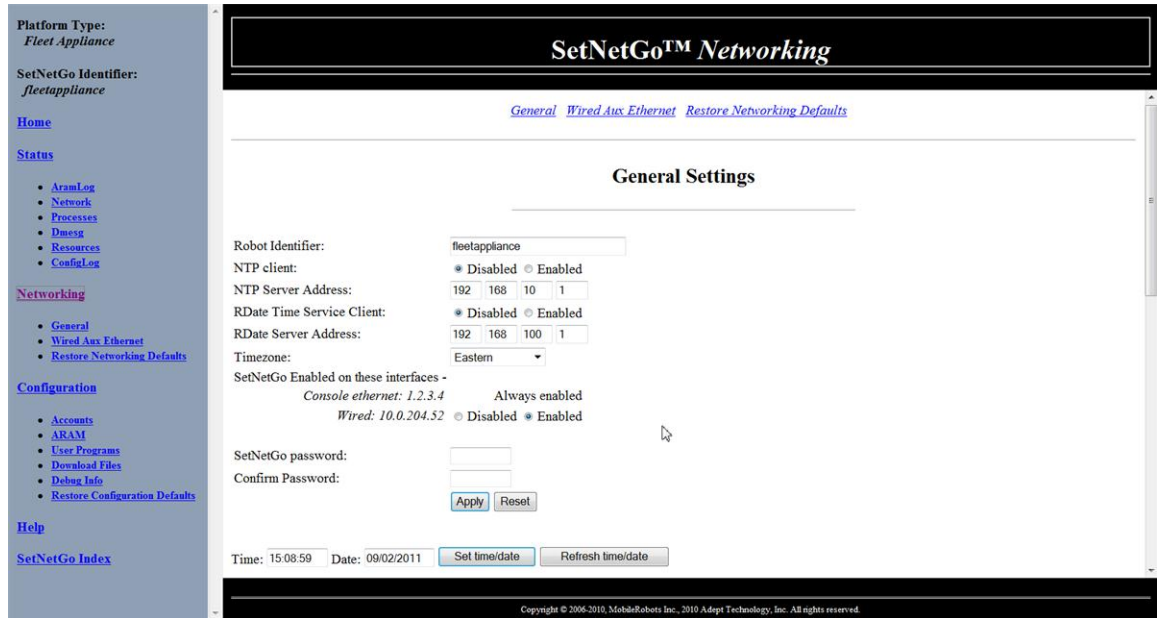


Figure 3-5. SetNetGo General Settings Screen

2. Select the **Enabled** radio button under *SetNetGo Enabled on these Interfaces: Wired* heading.

#### To define login information for the Fleet Appliance:

1. On the General Settings screen, enter the desired password in the *SetNetGo password* field.
2. Re-enter the password in the *Confirm Password* field.
3. Click Apply.

#### To synchronize clocks between the Fleet Appliance and mobile robot:

You can set the mobile robots to synchronize their clock with the Fleet Appliance clock using the RDate setting.

1. Select **Enable** next to the *RDate Time Server Client* field on the General Settings screen.
2. Enter the **IP address** of the Fleet Appliance in the *RDate Server Address* field.
3. Select the **Timezone** from the pull-down menu.

For more information on the using SetNetGo Networking parameters, refer to the [Adept Motivity User's Guide](#).

### Connecting the Fleet Appliance to Your Network

After you've performed the configuration tasks described above, you can physically connect the Fleet Appliance to your network.

1. Start up a web browser on a PC connected to your network.
2. Enter "https://X.X.X.X" in the address field and press Enter (where X.X.X.X is the IP address assigned to the Fleet Appliance). The SetNetGo screen is displayed.

**Note:** Be sure to communicate with IT staff to confirm that the Fleet Appliance is able to communicate with the wireless network.

# Chapter 4: Operation

This chapter describes how to operate the Adept Motivity Fleet Appliance. Before proceeding, you need to have performed the steps covered in the chapter Installation and Setup on page 19.

## 4.1 Turning Power ON and OFF

The power switch for the Fleet Appliance is located on the back of the device as shown below.



Figure 4-1. The Fleet Appliance Power Switch

The Fleet Appliance does not have a shutdown sequence, you can simply turn the device on and off as needed. Expect a 1 to 2 minute boot time.

## 4.2 Accessing the Fleet Appliance from the Robot

Before you can properly use the Fleet Appliance with your mobile robots, you must configure each mobile robot to connect to the Fleet Appliance. To do so, you must connect to SetNetGo on each mobile robot and enter the IP address of the device as shown below:

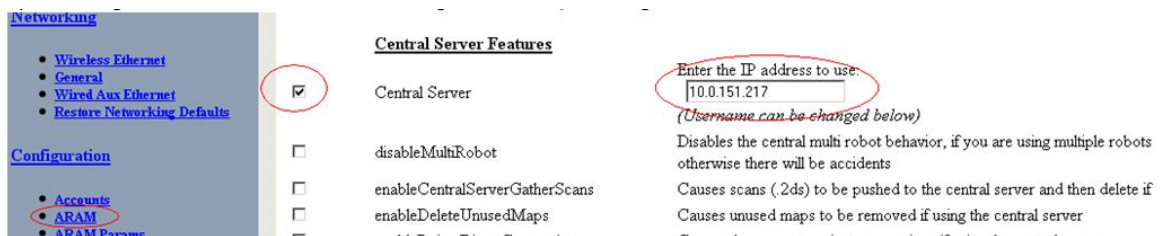


Figure 4-2. SetNetGo Device IP Address

For more information on using SetNetGo, refer to the [Adept Motivity User's Guide](#).

### 4.3 Updating ARAM

If you have a valid *aramcentral.tgz* file, you can update the ARAM version on the Fleet Appliance from within SetNetGo. For an updated ARAM package, contact Adept Technology, Inc., see How Can I Get Help? on page 8.

#### To update the ARAM package:

1. Open SetNetGo. (For details, refer to Connecting to SetNetGo on page 22.)
2. Click on the **Configuration > DownloadFiles** link from the menu on the left-side of the SetNetGo window. The SetNetGo screen is displayed with the Download Files section open as shown below.
3. Use the scroll bar to scroll the window up until the **Update ARAM Version** screen is displayed as shown below.

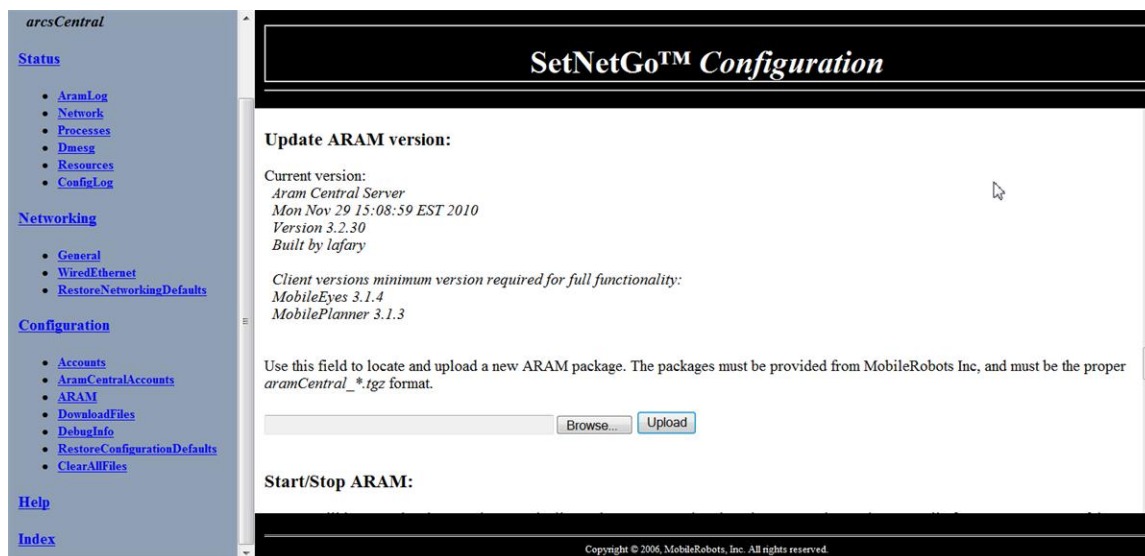


Figure 4-3. SetNetGo Update ARAM Version Screen

4. Click the **Upload** button to upload the ARAM package to the Fleet Appliance.
5. Click the **Browse** button to access the directory where the update file is located.

### Starting and Stopping ARAM

Whenever a change is made to the Fleet Appliance, ARAM is automatically stopped. However, you can force ARAM to stop or start through SetNetGo if needed.

1. Scroll the SetNetGo window down (starting at Update ARAM Version) until the **Start/Stop ARAM** screen is displayed as shown below.

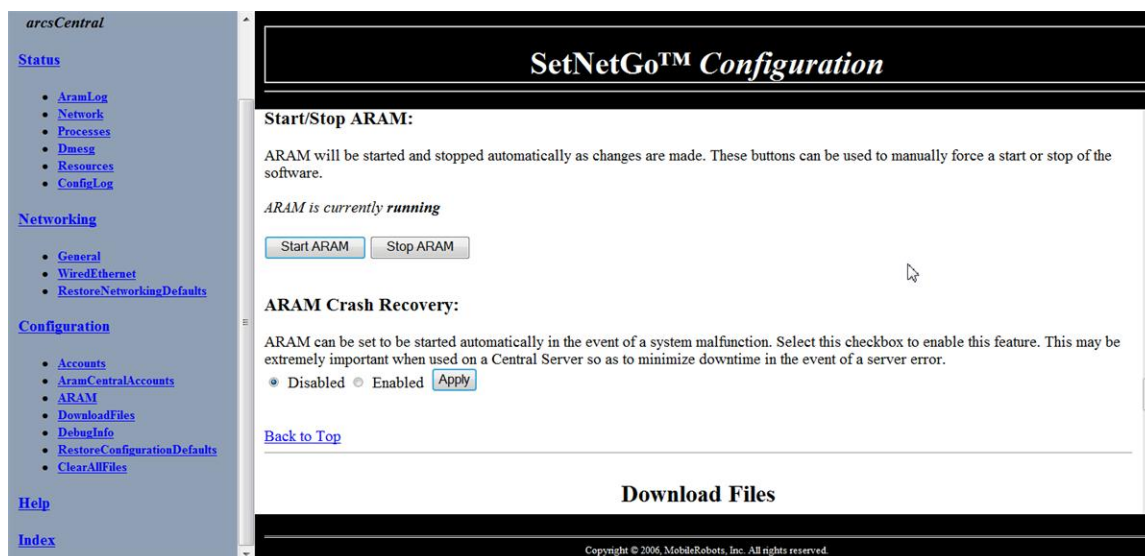


Figure 4-4. SetNetGo Start/Stop ARAM Screen

2. Click on the **Start ARAM** or **Stop ARAM** button depending on whether you are starting or stopping ARAM.

## ARAM Crash Recovery

You can set ARAM to start automatically in the event of a system malfunction. This can be extremely helpful in minimizing downtime when using a Fleet Appliance.

1. Scroll the SetNetGo window down (starting at Start/Stop ARAM ) until the **ARAM Crash Recovery** screen is displayed as shown below.

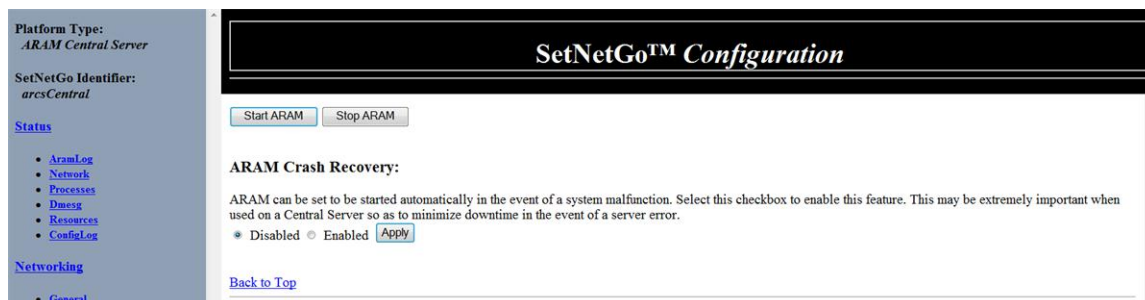


Figure 4-5. SetNetGo ARAM Crash Recovery Screen

2. Select **Disable** if you do not want ARAM to start automatically in the event of a system crash.
3. Select **Enable** to automatically start ARAM in the event of a system crash.
4. Click on the **Apply** button to have your selection saved.

## 4.4 Resetting to Factory Defaults

You can reset all the networking and general settings for the Adept Motivity Fleet Appliance to their factory defaults. You can also restore the following ARAM configuration default settings from SetNetGo:

- Original I/O settings
- Original Account Settings
- Originally enabled ARAM features

### To restore network and general settings:

1. Connect to SetNetGo (see [Connecting to SetNetGo](#) for details).
2. Select **Networking > RestoreNetworkingDefaults** from the SetNetGo menu. The Reset to Factory Defaults section is displayed.
3. Click the **Reset Factory Defaults** button.

You can restore the following configuration default settings from SetNetGo:

- Original I/O settings
- Original Account Settings
- Originally enabled ARAM features

### To restore default configuration settings:

1. Launch an Internet browser and connect to SetNetGo (see [Connecting to SetNetGo](#) for details).
2. Select the **Restore Configuration Defaults** link from the left-side of the SetNetGo screen. The SetNetGo screen is displayed.
3. Click the **Restore Configuration** button to return the configuration settings to the factory defaults.



**CAUTION:** Restoring network and configuration defaults will reset *all* changes you have made to SetNetGo.

# Chapter 5: Technical Specifications

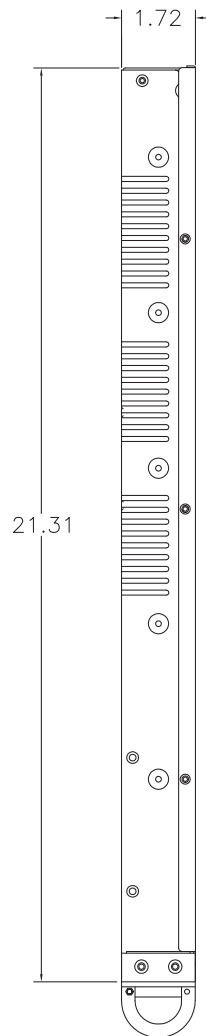
---

## 5.1 Dimension Drawings

The following Fleet Appliance dimensional drawings are shown.

- Left view
- Top view
- Rear view
- Front out-side view

### Left View of the Fleet Appliance



*Figure 5-1. View of the Fleet Appliance from the Left*

### Top View of the Fleet Appliance

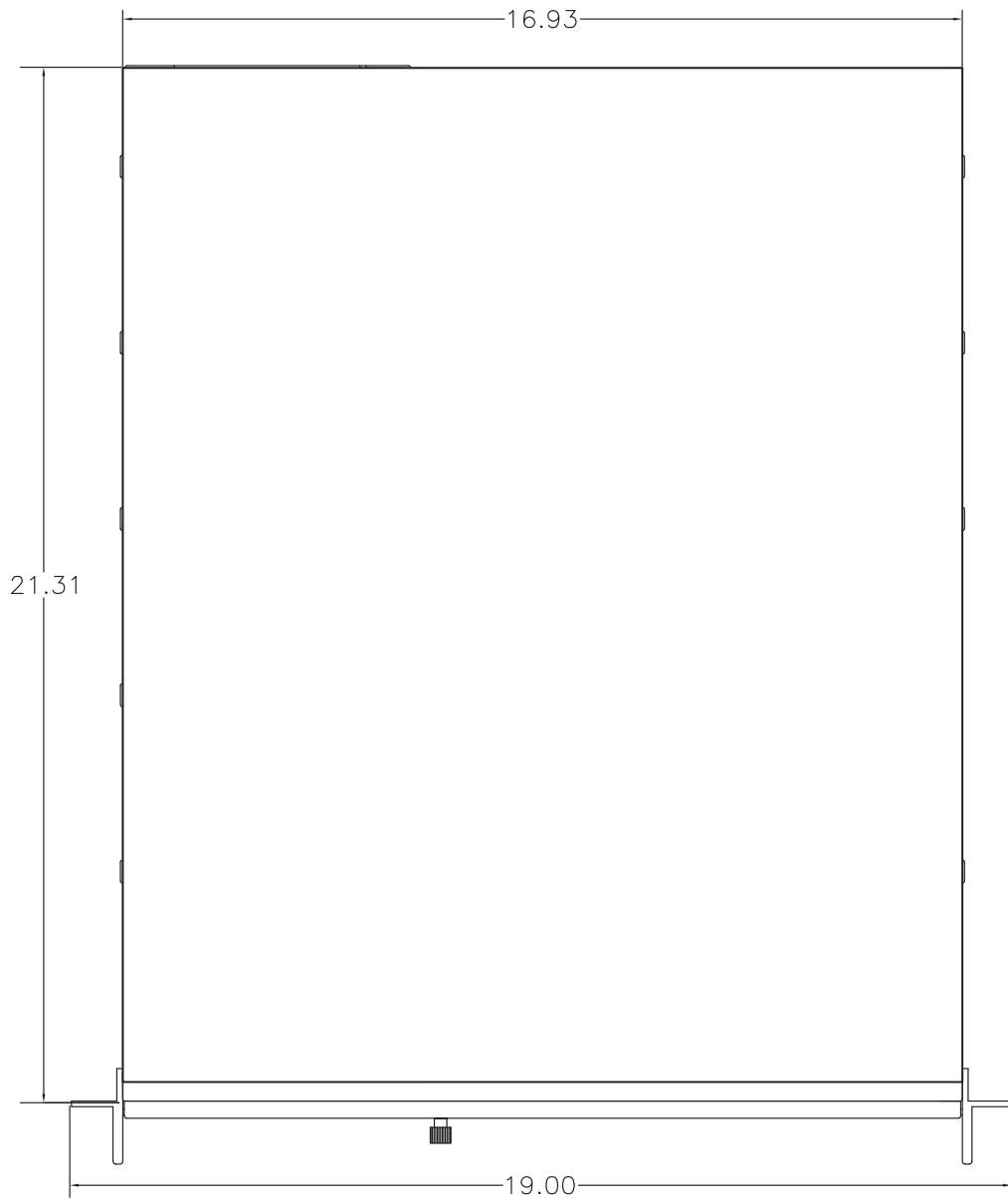


Figure 5-2. View of the Fleet Appliance from the Top

### Rear View of the Fleet Appliance

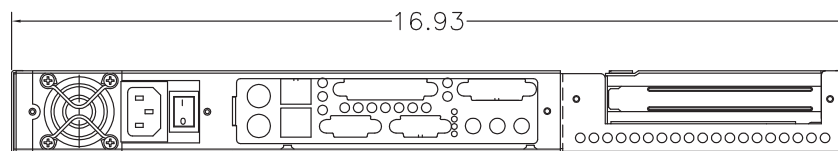


Figure 5-3. View of the Fleet Appliance from the Back

## Front View of the Fleet Appliance

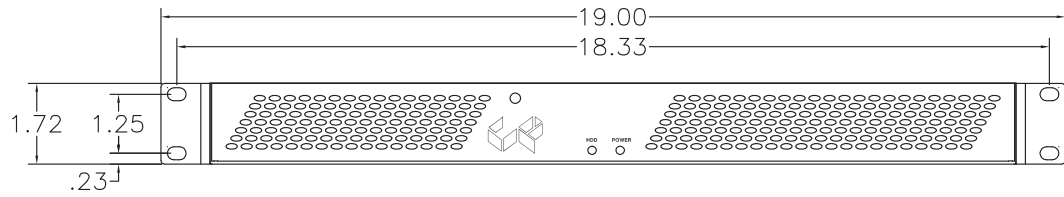


Figure 5-4. View of the Fleet Appliance from the Front on the Outside

## 5.2 Fleet Appliance Specifications

The specifications for the Fleet Appliance are listed in the table below.

Table 5-1. The Adept Motivity Fleet Appliance specifications are listed in the table below.

Description	Specification
<b>Physical</b>	
Length	43.69 mm (1.72 in)
Width	482.6 mm (19 in)
Depth	541 mm (21.3 in)
Weight	8618 g (19 lb)
<b>Environmental</b>	
Operating Temperature	0° C to 55° C (32° to 131° F)
Storage Temperature	-40° C to 70° C (-40° to 158° F)
Relative Humidity (non-condensing)	5 to 95%







5960 Inglewood Drive  
Pleasanton, CA 94588  
925·245·3400

**PN: 11035-000 Rev A**